

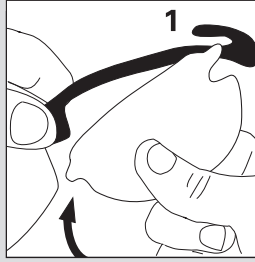
keylines do not print  
art @ 100%



Courchevel Eyewear

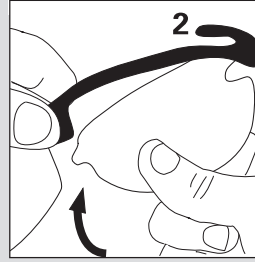
Tech Support Line  
1-800-727-2453  
20-2099 1005\_1

## lens installation



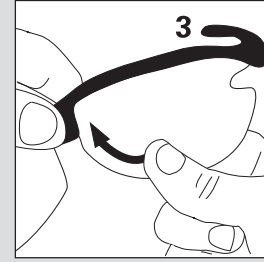
Step 1

Insert the upper tab on the outside edge of the lens straight into the notch in the frame near the hinge.



Step 2

Pivot the lens upward towards the frame.



Step 3

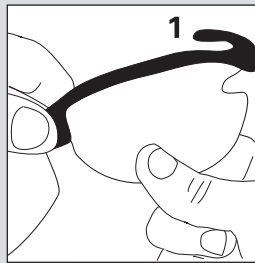
Grasp the frame near the center and grasp the lens along the bottom edge. Gently flex the frame while pushing the inner tab of the lens into the notch in the frame above the nosepiece.



Courchevel Eyewear

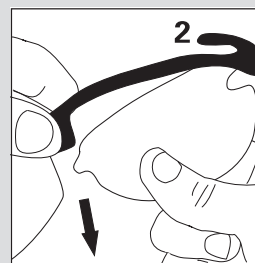
Tech Support Line  
1-800-727-2453  
20-2099 1005\_1

## lens removal



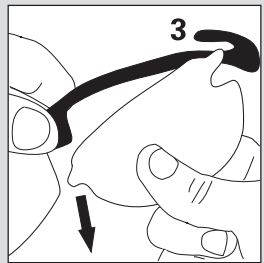
Step 1

Grasp the frame near the center and grasp the lens along the bottom edge. Gently flex the frame while pushing the inner tab of the lens into the notch in the frame above the nosepiece.



Step 2

Pivot the lens downward away from the frame.



Step 3

Pull the upper tab on the outside edge of the lens straight out and away from the notch in the frame near the hinge.