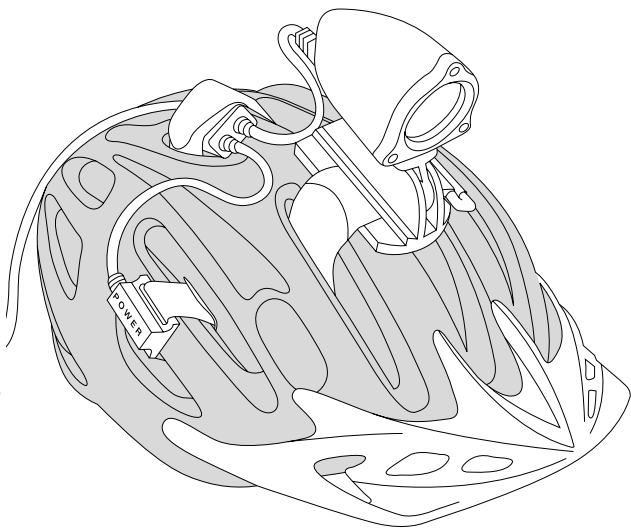


PERFORMANCE[®]

ViewPoint[™] PRO

helmet headlight system

Thank you for purchasing a ViewPoint light system! Please read the following instructions and safety tips carefully. We hope they will increase your enjoyment and maximize the life and performance of your light system, battery and charger.



⚠ CAUTION

Avoid burns. Do not touch headlamp housing or bulb during or immediately after use. Maintain air flow over light during use.

Battery/Charger Care and Maintenance

1. We have taken extensive measures to ensure you do not accidentally short circuit your battery; however, you must NOT attempt to connect the positive terminal to the negative terminal either directly or indirectly. **CAUTION: DO NOT** attempt to alter any of the electrical components; doing so may result in damage to the light system and possible injury. Never carry your Ni-MH battery pack by the power cord. Always carry your Ni-MH battery around the body of the pack.
2. Your ViewPoint system uses Nickel Metal Hydride (Ni-MH) battery technology. The charger that comes with all ViewPoint systems is fully AUTOMATIC and easy to use when you follow these simple instructions. Before charging, make sure the battery and charger are in a dry, well-ventilated area. The temperature should be between 0° and 40° C (32° to 104° F).

Battery Charging

1. Remove the battery pack from the protective neoprene pouch.
2. Plug the ViewPoint Ni-MH automatic charger into a standard house wall receptacle (120VAC). The LED on the charger cord will illuminate green.
3. Connect the battery to the charger; the LED will remain green. Next push the button marked "PUSH TO START CHARGE." The LED will switch to red, indicating the battery is charging. See below for your system's charge time. Your battery will not be harmed if left on the charger indefinitely. As with all electrical products you should unplug the charger when not in use.



Charge times:

- Pro Single 10.5 hour charge cycle
- Pro Helmet 10.5 hour charge cycle
- Pro Dual 12.5 hour charge cycle

4. The LED indicator displays the battery's state of charge. The LED indicator will illuminate green when the battery is fully charged and ready to use.

Red = Charging

Green = Charged

Note: A Ni-MH battery does not have to be fully discharged before it can be recharged. Do not over-discharge the battery, as this may shorten battery life. When light output dims, turn off the system and recharge the battery. Treated properly, a Ni-MH battery will provide hundreds of cycles before replacement is required.

Battery Storage and Disposal

Ni-MH Battery Storage: Once a Ni-MH battery is fully charged and removed from the charger, it can be stored for several months. However, it will self-discharge over time. Your Ni-MH battery will require a top-up charge for maximum power after a week or more of storage. The battery is not harmed if stored in a discharged state, but you should top up your battery every four months to ensure best performance and maximum life. Store your battery in a cool and dry location. If you prefer, you can leave your battery connected to the charger during the riding season. As with all electrical products you should unplug the charger when not in use.

Ni-MH Battery Disposal: Do not incinerate, tamper with or cut open the battery pack. Do not discard in the trash or send it to a landfill. Contact your local waste removal authority for instructions.

Installation and Use

When packed, the battery is partially charged. For full run time you will need to charge the battery before the first use. See "**Battery Charging.**"

CAUTION

- To avoid possible injury, keep battery and charger out of reach of children.
- Do Not operate charger outdoors or in a wet or damp environment.
- Do Not place the battery pack in a sealed container when charging or discharging.
- **When charging, remove the battery pack from the protective neoprene pouch.**
- The battery should be charged at a temperature between 5° to 40° C or 40° to 104° F.
- Store your Ni-MH battery at a temperature between 5° to 40° C or 40° to 104° F.
- **Do Not use the ViewPoint Pro Helmet Charger to charge the ViewPoint Pro Dual battery.**
- Do Not operate the charger with a damaged cord or plug; replace the charger immediately.
- Do Not operate the charger if it has received a sharp blow, been dropped, or otherwise damaged in any way.
- To reduce risk of electric shock or injury, unplug the charger from the outlet before cleaning or inspecting.
- Before connecting the charger to a power source (receptacle, outlet, etc.) be sure the voltage supplied is the same as recommended for the charger – i.e. 120 Volts. A power source with voltage greater than specified can result in serious injury to the user and damage to the charger. If in doubt, DO NOT plug in the charger.
- Do Not abuse the cord. Never carry the charger by the cord or pull the cord to disconnect the charger from the receptacle.
- Do Not use any other charger with your ViewPoint Ni-MH battery pack. Use ONLY the ViewPoint Ni-MH charger supplied with this light system.
- It is important to use only genuine ViewPoint parts and components when charging the battery or using the light. All parts and components have been specifically designed, approved and manufactured to integrate correctly for your safety and for optimal light performance.

Light Bulbs

Halogen bulbs become very hot when illuminated. Never touch the bulb when it is illuminated! If you need to replace the bulb for any reason, allow at least fifteen (15) minutes for the bulb to cool before touching it. Do not allow children to touch the bulb or bulb housing.

Standard bulbs supplied with ViewPoint systems:

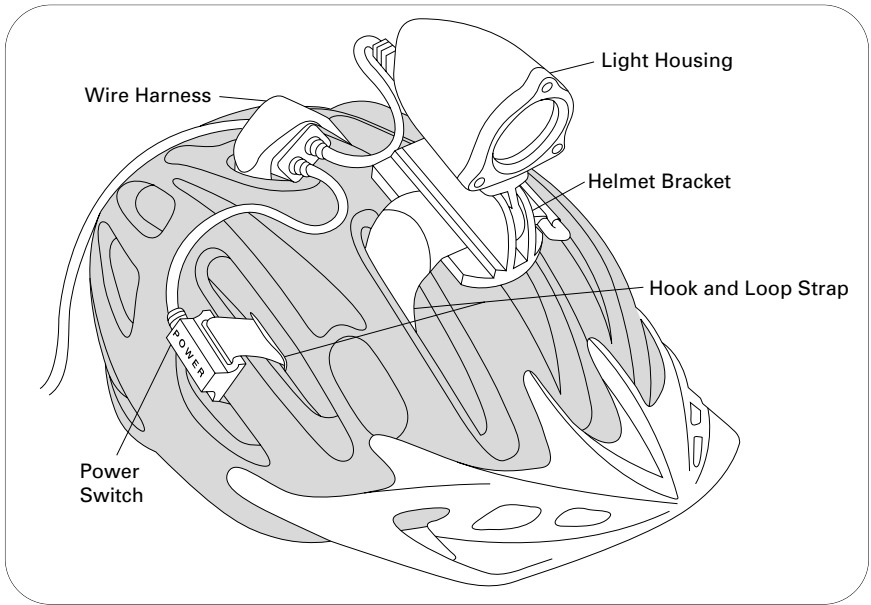
Pro Single	6 Volt 10 Watts = approx. 2 hour run time
Pro Helmet	6 Volt 10 Watts = approx. 2 hour run time
Pro Dual	6 Volt 10 Watts = approx. 4 hour run time
	6 Volt 20 Watts = approx. 2 hour run time
	Combined 30 Watts = approx. 1 hour run time

CAUTION

If the glass bulb lens is cracked or broken do not operate the light.
Replace bulb before operating.

Helmet Bracket

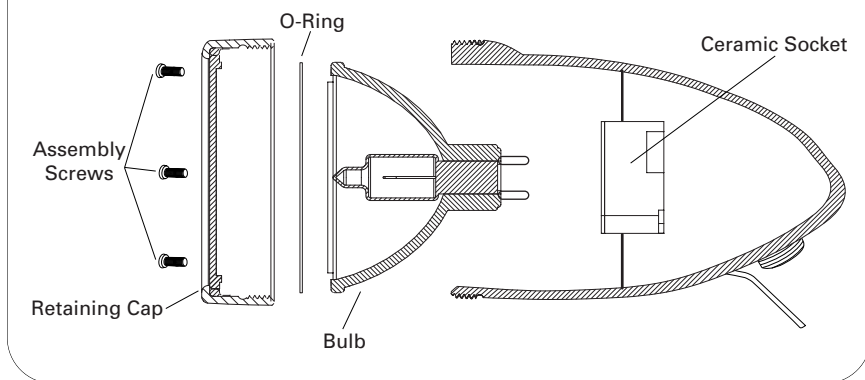
Refer to the diagram below to mount the ViewPoint Pro Helmet light. No tools required!



The helmet bracket is secured to your helmet with a hook and loop strap that feeds through the helmet's ventilation holes.

1. Center the bracket on the helmet, approximately a third of the way between the front and back of the helmet.
2. Feed the hook and loop strap down through a vent hole next to the bracket, and then up through a vent hole on the other side of the bracket. Loop the strap through the "D" ring, feed it back through the vent hole and pull snugly to secure the bracket. Once the strap is tight and the bracket is secure, fasten the hook and loop strap.
3. Secure the power switch and wire harness to the helmet using the hook and loop straps as shown above.
4. Attach the light housing to the helmet bracket. Align the bracket on the underside of the light housing with the helmet bracket, and slide the light onto the bracket from back to front. You should hear an audible 'CLICK' indicating that the light is securely attached to the bracket.
5. Adjust headlamp angle as desired by grasping the light housing and rotating up or down.
6. To remove the light from the helmet bracket, push the Release Tab at the rear of the light housing upward, and slide the light rearward until it is free from the helmet bracket.
7. Insert the 90° plug from the wire harness into the power jack at the rear of the light housing. Connect the remaining cord from the wire harness to the battery cord.
8. To operate: Press the power switch to turn on the light. Press and hold the power switch for 1.5 seconds to turn off the light.

Exploded View of Light Housing



Bulb Replacement

1. Disconnect the light housing from the battery pack.
2. Remove the three retaining cap assembly screws from the front of the light housing, and remove the retaining cap (be careful not to lose the O-ring seal inside the retaining cap).
4. Remove the old bulb from the ceramic socket. It may be necessary to use a small screwdriver to **gently** pry the bulb loose.
5. Install the new bulb by inserting the bulb lead wires into the small holes in the socket, and gently pressing into place.
6. Reinstall the retaining cap (make sure the O-ring seal is in place) and retighten the assembly screws. Do not connect the headlamp to the battery pack until the retaining cap is reattached.

Additional Operating Instructions

1. Do Not use solvents or harsh cleaners to clean your ViewPoint light system. Use only a damp cloth to clean the unit. Before cleaning, unplug all wires from the battery pack, light housing and wall receptacle (or power source).
2. Do Not let children handle the battery, charger or light housing.

PERFORMANCE®

**Performance Tech Support 1(800)727-2453
9am-6pm EST Monday-Friday**



Performance, Inc.

One Performance Way

Chapel Hill, N.C. 27514

1-800-727-2453

Made in Canada

www.performancebike.com

PERFORMANCE and the Flying P Logo are registered marks of Performance, Inc.

0702_2