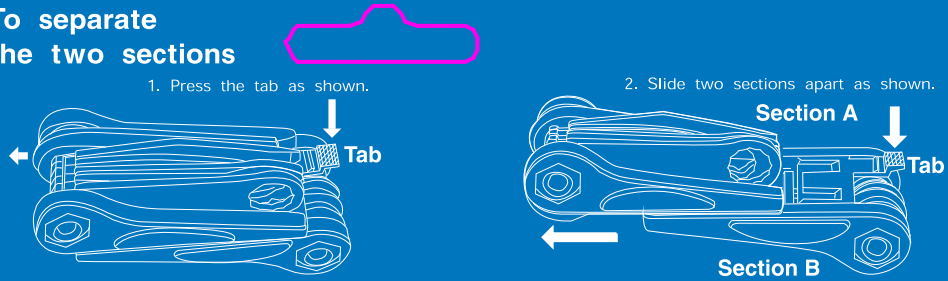


To separate the two sections

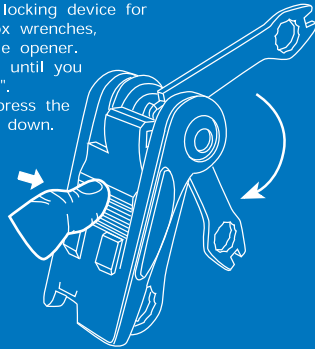


⚠ CAUTION

Always separate the two sections before use. Failure to do so may damage the tool.

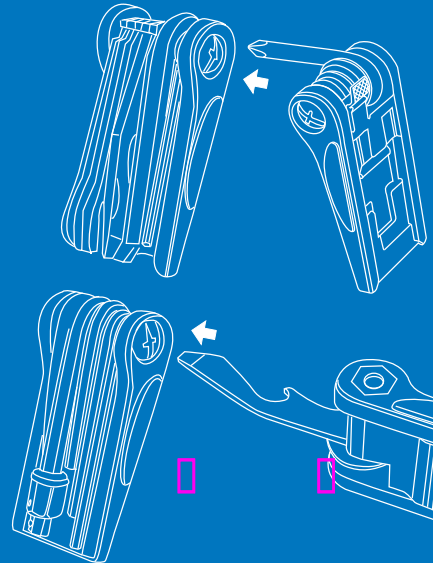
Locking Device

The mini tool offers a locking device for the 8, 9 and 10mm box wrenches, serrated knife and bottle opener. Unfold the desired tool until you hear an audible "CLICK". To release the tool depress the plate and fold the tool down.



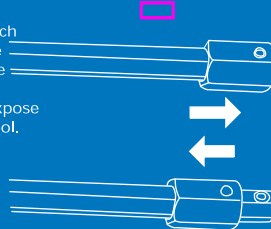
Tool Maintenance

Use Phillips or flat screwdriver to adjust tightness of tool as shown.



5mm and 8mm Hex Wrenches

For the 8mm hex wrench slide the adapter to the end of the tool. For the 5mm hex wrench slide the adapter down to expose the 5mm end of the tool.



⚠ WARNING

The knife blade on this tool has a sharp cutting edge. Use knife with extreme

Tech Support Line 1-800-727-2453



Performance Inc.
One Performance Way
Chapel Hill, NC 27514
Made in Taiwan
PerformanceBike.com
PERFORMANCE and the Flying P are registered marks of Performance Inc.

