

- off the light and remove the batteries (see "Battery Installation"). Dry the batteries and the interior of the battery case completely before resuming use.
- 6. If the battery contacts become tarnished or corroded, use a fine grain emery cloth to carefully clean the contact surfaces.
- 7. The lamp housing is not designed to be opened. Do not attempt to open the lamp housing, as this may damage the system.

CAUTION

Before cleaning, disconnect power plug from lamp housing and remove batteries from battery case.

ViewPoint™ GEN³ single headlight system



Congratulations on your purchase of a ViewPoint™ Gen³ light system! Please read the following instructions and safety tips to maximize the life and performance of your new light system.

I. General Tips and Information

1. The ViewPoint™ Gen³ light system utilizes Emitter technology and engineered optics to provide intense, focused white light and exceptional run time in a lightweight package.
2. Operating Temperature Range: The Gen³ is designed to operate in temperatures between 14°F and 104°F (-10° to 40°C). Operating outside this temperature range may affect light performance or damage the system.
3. System Weight: 144g (system) + 100g (batteries) = 244g total
4. Light Source: The ViewPoint™ Gen³ uses a Luxeon® Emitter. Manufacturer estimated bulb life = 100,000 hours.
5. The Gen³ offers two power modes: Low Beam (10% power) and High Beam (100% power). Run times listed in the table below were achieved in a 68°F operating environment, and will vary in different conditions.

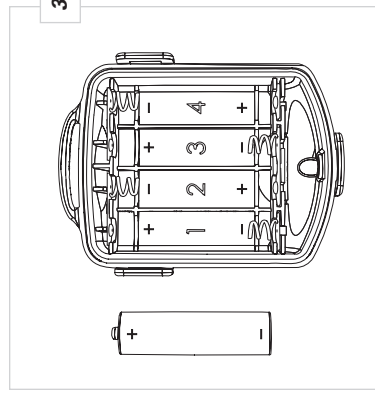
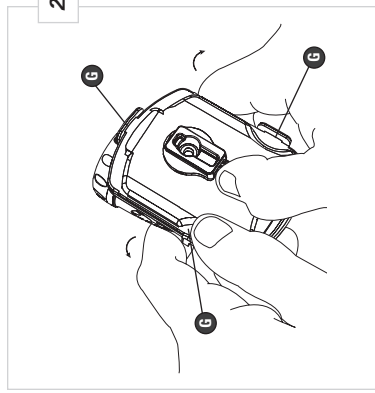
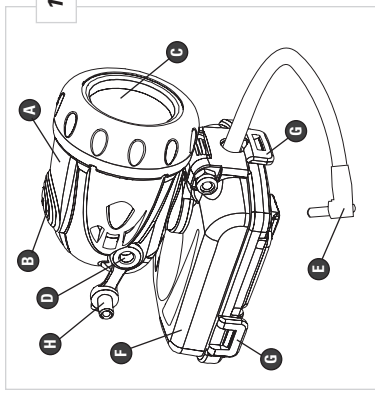
Light Output	Alkaline Battery Run Time	NiMH Battery Run Time
High Beam (100%)	9 Hours	9 Hours
Low Beam (10%)	96 Hours	72 Hours

**Performance Tech Support 1(800)553-8324
9am-6pm EST Monday-Friday**

II. Installation

A. Battery Installation

1. The ViewPoint™ Gen³ requires 4 "AA" batteries. You can use Alkaline batteries or rechargeable NiMH or NiCd batteries, but you should not mix battery brands or battery types.
2. Never connect any other power source to the Gen³ light. Other battery packs may look similar, but may operate at a different voltage and could damage the system.
3. Open the battery case by releasing the three clasps (G) and separating the top and bottom halves of the case. See Figure 1 and Figure 2.
4. Insert 4 "AA" batteries, ensuring battery orientation matches the diagram inside the battery case. See Figure 3.
5. Fit the bottom and top halves of the battery case back together and close firmly. Make sure the battery case is completely sealed by pressing the three clasps (G) firmly until you hear an audible "CLICK". See Figure 4.
6. Dispose of used batteries properly. Do not incinerate, discard in the trash or send to a landfill. Contact your local waste removal authority for instructions on how and where to recycle batteries.



6. Fine tune side to side adjustment by grasping the housing (A) and rotating it left or right to the desired position. Adjust the rotation tension by tightening or loosening the Phillips screw on the underside of the housing.
7. Adjust the vertical angle of the light by rotating the position of the handlebar bracket.

III. Using your Light

The ViewPoint™ Gen³ offers two power modes: *Low Beam (10% power)* and *High Beam (100% power)*.

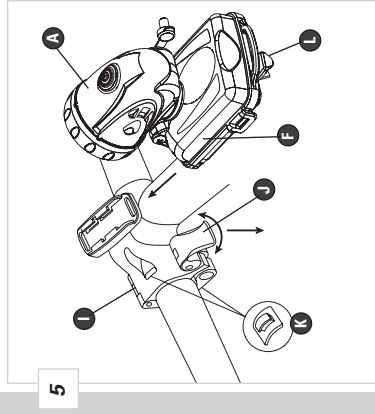
1. Connect the power plug (E) to the power jack (D).
2. Press the power button (B) to turn on the light. Press the power button repeatedly to cycle through the modes in the following order: OFF--LOW BEAM--OFF--HIGH BEAM--OFF

CAUTION

- Do not look directly at light source. Do not shine light directly in eyes.
- The lamp housing is not designed to be opened. Do not attempt to open the lamp housing, as this may damage the system.

IV. Care & Maintenance

1. Before storing your light system, ensure the entire unit is clean and completely dry. Store at room temperature out of direct sunlight. Do not store in high humidity.
2. Before storing for an extended period of time, remove the batteries from the battery case. Disconnect the power plug (E) from the power jack (D) and insert the jack plug (H) to keep moisture and dust out of the lamp housing.
3. Optic Lens: Take special care when cleaning the optic lens (C) to avoid scratches, which may reduce performance and light quality. If the lens becomes dirty, run water over the surface of the lens to remove dirt and grit. Then use a soft, non-abrasive cloth to carefully dry the lens. DO NOT use glass cleaners or chemicals to clean the lens.
4. To clean the battery case and lamp housing assembly, use a damp cloth and mild soap. Do NOT use solvents or harsh cleaners. Allow to air dry, or use a soft cloth.
5. Note: The battery case is not completely waterproof. If the unit is completely submerged, turn



B. Handlebar Bracket and Light Installation

1. Mount the ViewPoint™ Gen³ to your handlebar as shown in Figure 5. Open the handlebar bracket (I), and attach to the handlebar so the light (when installed) will be centered over the stem. To attach to larger diameter handlebars, remove the rubber inserts (K) from inside the bracket.
2. Adjust bracket clamping tension by spinning the quick release lever (J) clockwise or counterclockwise, and then flipping the lever downward to secure the bracket. Ideal tension will prevent the bracket from moving on the bar while riding. Do not over tighten.
3. Attach the light to the handlebar bracket. Align the bracket on the underside of the battery case with the handlebar bracket, and slide the light onto the bracket from back to front until it is securely engaged. See Figure 5.
4. To remove the light from the handlebar bracket, lift the release tab (L) on the battery case upward and slide the light backward.
5. The lamp housing can be adjusted horizontally and vertically to fine tune beam direction.