

PERFORMANCE

PERFORMANCE

XPORTTM Slipstream

3-bike hitch rack (1¼" and 2")



Congratulations on your purchase of an XPORTTM Slipstream hitch rack. This rack will securely carry up to 3 bicycles, and tilts down to allow convenient access to the rear of your vehicle. Please read these instructions thoroughly before using your new hitch rack.

CAUTION

IT IS THE USER'S RESPONSIBILITY TO ENSURE THE SAFE AND PROPER USE OF THIS PRODUCT. Improper attachment or misuse of this product may result in personal injury and serious damage to the bicycles, the hitch rack, your vehicle or vehicles following behind you on the road.

**Performance Tech Support 1(800)553-8324
9am-6pm EST Monday-Friday**



Minimum Hitch Requirement:
Class I receiver hitch, bolted to the vehicle chassis.



Maximum Bicycle Limit:
3 bicycles



Maximum Load Limit:
1¼" foot = 45 lb MAX per bicycle (135 lbs total)
2" foot = 45 lb MAX per bicycle (135 lbs total)



Performance, Inc.
One Performance Way
Chapel Hill, N.C. 27514
1-800-727-2453
Made in China
www.performancebike.com
PERFORMANCE and the Flying P Logo are registered marks of Performance, Inc.

40-1977/40-1978 0404_1

CAUTION

Do not exceed maximum bicycle limit or maximum load limit listed in this owner's manual. Combined weight of rack and bicycles must not exceed vehicle or receiver hitch maximum tongue weight.

I. Parts List

Part	Part Code	Quantity
Upright Tube.....	A.....	1
Hitch Foot (1½" or 2").....	B.....	1
Base Bracket.....	C.....	1
Cradle Arms.....	D.....	2
Knob Bolts.....	E.....	2
Cradles & Cradle Straps.....	F.....	6
Anti-sway Brackets & Straps.....	G.....	3
¾" Assembly Bolts.....	H.....	2
½" Assembly Bolt.....	I.....	1
Small Flat Washers.....	J.....	4
Large Flat Washers.....	K.....	2
Small Locknuts.....	L.....	2
Large Locknuts.....	M.....	1
Small Nut Caps.....	N.....	4
Large Nut Caps.....	O.....	2
Clevis Pin.....	P.....	1
Pin Clip.....	Q.....	1
End Plug (2" hitch only).....	R.....	1
Side Plates (1½" hitch only).....	S.....	2
Hitch Bolt.....	T.....	1
Slotted Washer.....	U.....	1
Square Nut (2" hitch only).....	V.....	1
Nut Retainer (2" hitch only).....	W.....	1
Security Strap.....	X.....	1

II. Assembly

Assembling the Hitch Rack

1. Remove the hitch rack and all other contents from the box.
2. Attach the Upright Tube (A) to the Hitch Foot (B) as shown in Figure 1 and Figure 2.
3. Attach the Cradle Arms (D) to the Upright Tube (A) as shown in Figure 3. Fit each Cradle Arm into the top post of the Upright Tube. Align the Knob Bolts (E) with the threaded nut inside the top post, and tighten securely.

Installing the Hitch Rack (1½" Hitch Foot)

1. Slide the Hitch Foot (B) into the vehicle receiver hitch. See Figure 4.
2. Align the bolt hole in the Hitch Foot with the hole in the vehicle receiver hitch. Slide the Slotted Washer (U) onto the Hitch Bolt (T), thread the Bolt through the receiver hitch and Hitch Foot, and tighten securely.

Installing the Hitch Rack (2" Hitch Foot)

1. Insert the Square Nut (V) into the Nut Retainer (W) and slide both into the end of the Hitch Foot (B) so they are aligned with the bolt hole in the Hitch Foot. See Figure 5.
2. Slide the Hitch Foot (B) into the vehicle receiver hitch.
3. Align the bolt hole in the Hitch Foot with the hole in the vehicle receiver hitch. Slide the Slotted Washer (U) onto the Hitch Bolt (T), thread the Bolt through the receiver hitch and Hitch Foot, and tighten securely.

III. Using the Hitch Rack

Loading the Bicycles

1. Adjust the position of the Cradles (F) so they will best accommodate the bicycles to be carried. The Cradles can be rotated and shifted forward or backward on the Cradle Arms (D) as necessary.
2. Load the largest bicycle first, and position it closest to the vehicle. Make sure the bicycle cannot contact or scratch the rear of the vehicle.
3. Secure the bicycle to the Cradles with the Cradle Straps (F). See Figure 6.
4. Stabilize the bicycle using the Anti-sway Bracket and Strap (G). See Figure 6.
5. Load all additional bicycles, alternately facing the handlebars to the left or right so that alternating bikes face in opposite directions.
6. As an additional precaution, secure the bikes to the rack using the Security Strap (X) as shown in Figure 6. Pass the strap around the bicycle furthest from the vehicle and around the Upright Tube (A).
7. We recommend using additional straps or shock cords to further prevent contact between bikes, and to prevent the wheels from spinning.
8. Before driving, make sure the bicycle tires are clear of the exhaust, and that all bicycles are securely attached to the rack.

CAUTION

FOR SAFE AND PROPER USE OF YOUR HITCH RACK:

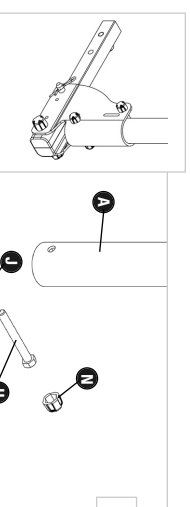
1. Keep bicycle tires clear of the exhaust pipe. Hot exhaust can melt or burn bicycle tires.
2. Inspect your hitch rack before each use, both before and after loading bicycles. Ensure all bolts, knobs, clevis pins and pin clips are installed properly and tightened securely.
3. Check the security of all bikes at regular intervals during use, more frequently on bumpy roads, and immediately if the bicycles shift position.
4. Never exceed the maximum bicycle limit or load limit listed in this owner's manual or receiver hitch maximum tongue weight.
5. Remove the hitch rack from vehicle when not in use.

Using the Tilt-down & Folding Arm Features

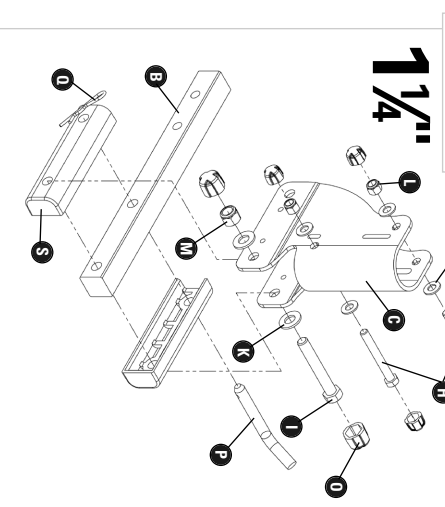
1. Do not tilt the rack with bicycles attached. If you lose your grip while tilting the rack, it may fall, resulting in damage to the bicycles and rack and personal injury.
2. Hold the upright tube (A) in place or have someone hold it for you.
3. Remove Clevis Pin (P) from the Hitch Foot and carefully lower the upright tube. See Figure 7.
4. To return the rack to its upright position, raise the upright tube, insert the Clevis Pin (P) and secure it with the Pin Clip (Q).
5. The Cradle Arms (D) can be folded down when not in use. Loosen the Knob Bolts (E), fold the arms 90 degrees and retighten the Knob Bolts securely.

CAUTION

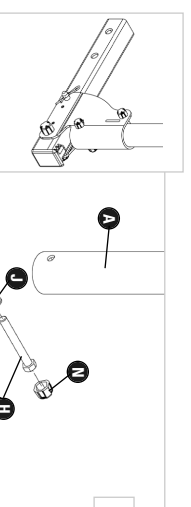
Do not tilt rack with bicycles attached. Rack could fall, damaging the bicycles and rack or causing personal injury. Do not drive with the rack tilted down. Rack must be secured in an upright position before driving. After returning the rack to an upright position, ensure all bikes are securely fastened to the rack before driving.



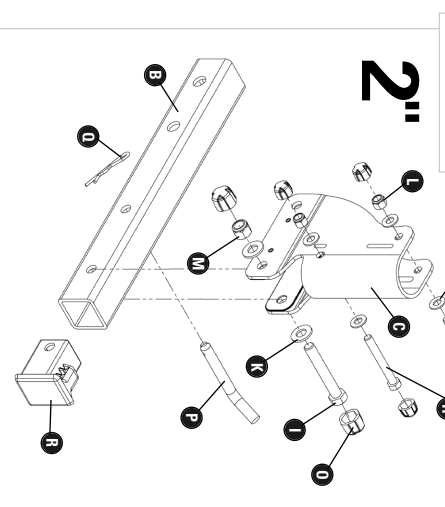
1



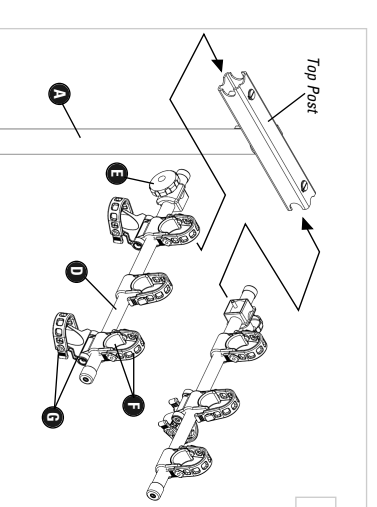
2



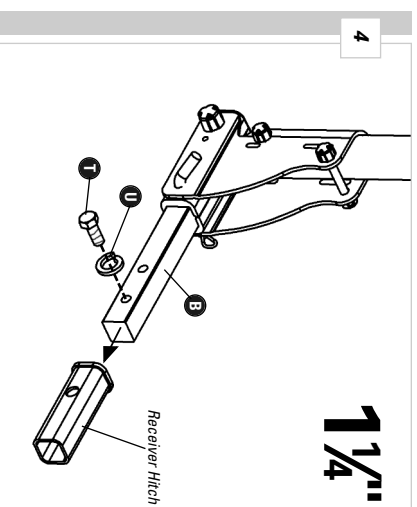
2



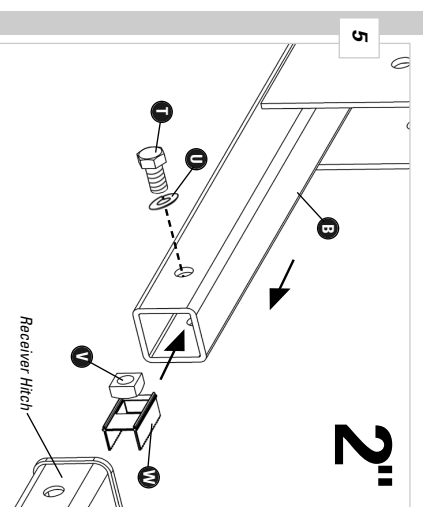
2



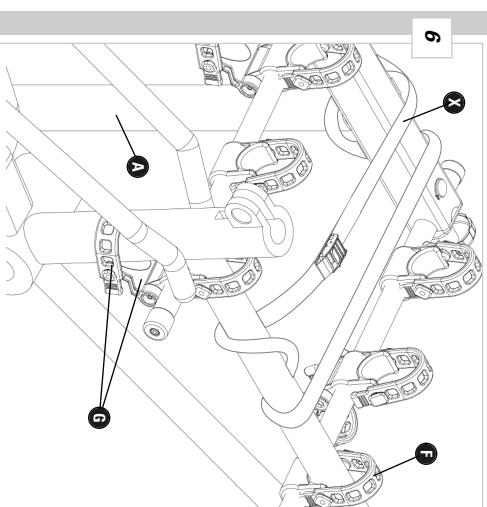
3



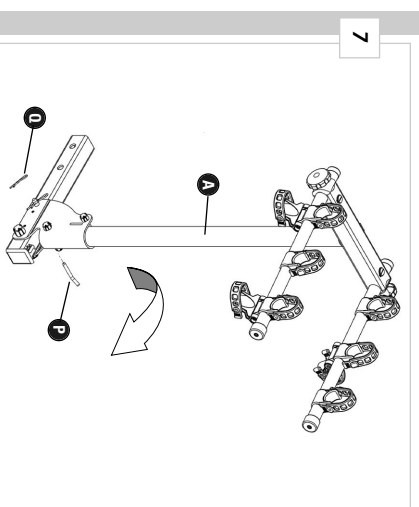
4



5



6



7