



# XPORT<sup>™</sup> odyssey

## 4-bike dual arm hitch rack (1 ¼" and 2")



**Performance Tech Support 1(800)553-8324  
9am-6pm EST Monday-Friday**

*Thank you for your purchase of an XPORT Odyssey hitch rack. This rack will securely carry up to 4 bicycles, and tilts down to allow convenient access to the rear of your vehicle. Please read these instructions thoroughly before using your new hitch rack.*



**Performance, Inc.**  
One Performance Way  
Chapel Hill, N.C. 27514  
1-800-727-2453  
www.performancebike.com  
Made in China

PERFORMANCE and the Flying P Logo are registered marks of Performance, Inc.

40-2010 0604\_2

### **⚠ CAUTION**

IT IS THE USER'S RESPONSIBILITY TO ENSURE THE SAFE AND PROPER USE OF THIS PRODUCT. Improper attachment or misuse of this product may result in personal injury and serious damage to the bicycles, the hitch rack, your vehicle or vehicles following behind you on the road.

### **⚠ CAUTION**

DO NOT EXCEED MAXIMUM BICYCLE LIMIT OR MAXIMUM LOAD LIMIT



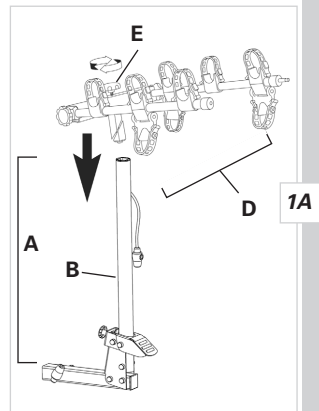
**Minimum Hitch Requirement:**  
Class II receiver hitch, bolted to the vehicle chassis.



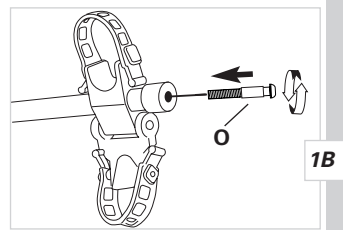
**Maximum Bicycle Limit:**  
4 bicycles



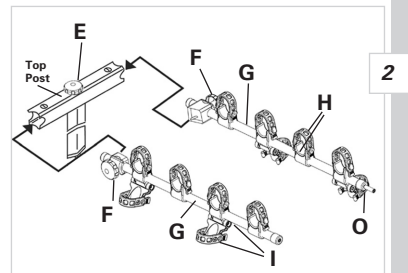
**Maximum Load Limit:**  
1 1/2" foot = 45 lb MAX per bicycle (180 lbs total)  
2" foot = 45 lb MAX per bicycle (180 lbs total)



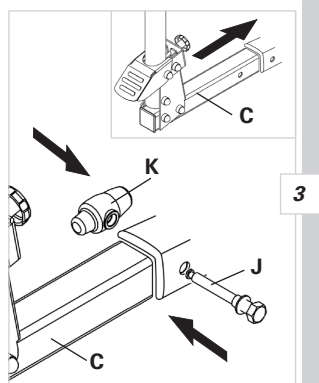
1A



1B



2



3

## I. Parts List

Part	Part Code	Qty
Hitch Base	A	1
Upright Tube	B	1
Hitch Foot	C	1
Carrier Head	D	1
Carrier Head Securing Knob	E	1
Knob Bolts	F	2
Cradle Arms	G	2
Cradles & Cradle Straps	H	.8 each
Anti-sway Brackets and Straps	I	.4 each
Hitch Pin	J	1
Hitch Pin Lock	K	1
Upright Securing Knob	L	1
Foot Pedal	M	1
Cable Lock	N	1
Cable Lock Post	O	1
Security Strap	P	1

## II. Assembly

### Assembling the Hitch Rack

1. Remove the carrier head (D) and the hitch base (A) (packaged separately) and all other contents from the boxes.
2. Attach the cradle arms (G) to the top post as shown in Figure 2. Fit each cradle arm into the top post. Align the knob bolts (F) with the threaded nut inside the top post, and tighten securely.
3. Insert the carrier head (D) into the upright tube (B), and securely tighten the carrier head securing knob (E). See Figure 1A.
4. Thread the lock post (O) into the end of the cradle arm (G) and tighten securely with a 6mm hex wrench. See Figure 1B.

### Installing the Hitch Rack

1. Slide the hitch foot (C) into the vehicle receiver hitch. See Figure 3.
2. Align the bolt hole in the hitch foot with the hole in the vehicle receiver hitch. Insert the hitch pin (J) and secure it with the hitch pin lock (K).

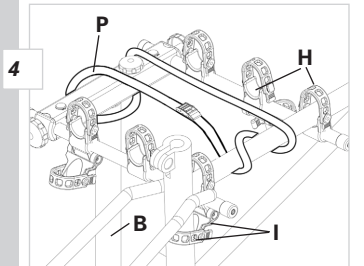
## III. Using the Hitch Rack

### Loading the Bicycles

1. Adjust the position of the cradles (H) so they will best accommodate the bicycles to be carried. The cradles can be rotated and shifted forward or backward on the cradle arms (G) as necessary.
2. Load the largest bicycle first, and position it closest to the vehicle. Make sure the bicycle cannot contact or scratch the rear of the vehicle.

3. Secure the bicycle to the cradles with the cradle straps (H). See Figure 4.
4. Stabilize the bicycle using the anti-sway bracket and strap (I). See Figure 4.
5. Load all additional bicycles, alternately facing the handlebars to the left or right so that alternating bikes face in opposite directions.
6. As an additional precaution, secure the bikes to the rack using the security strap (P) as shown in Figure 4. Pass the strap around the bicycle furthest from the vehicle and around the upright tube (B).
7. We recommend using additional straps or shock cords to further prevent contact between bikes, and to prevent the wheels from spinning.
8. Before driving, make sure the bicycle tires are clear of the exhaust, and that all bicycles are securely attached to the rack.

**NOTE:** Once loaded, all bikes should be balanced in a way that allows secure attachment to the rack. The bicycle frame should contact both cradle pads firmly, and the wheels of each bike should be as close to parallel with the ground as possible. This rack will accommodate many, but not ALL frame designs and sizes. Some frames with small main triangles—such as compact women's frames and some dual suspension frames—may require a top tube frame adapter (such as 40-1804) for secure attachment. Other frames may not fit at all in a way that allows them to be safely transported on this rack.



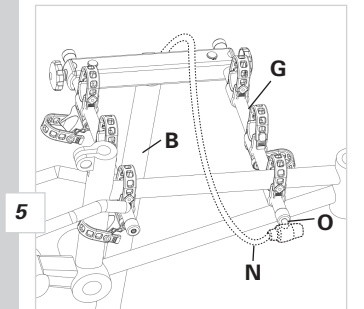
4

## CAUTION

Do not transport a bicycle which cannot be securely attached to the rack.

### Locking Bikes and Rack

1. Once the bicycles are loaded, secure them with the integrated cable lock (N).
2. Pass the head of the cable lock through the bicycle frames (and around the last frame on the rack), and secure it to the cable lock post (O) at the end of the cradle arm. See Figure 5.
3. When there are no bicycles on the rack, secure the carrier head (D) to the upright tube (B) by attaching the head of the cable lock to the lock post (O).
4. Keep in mind that locks deter theft but cannot guarantee the security of your bicycles or hitch rack.



5

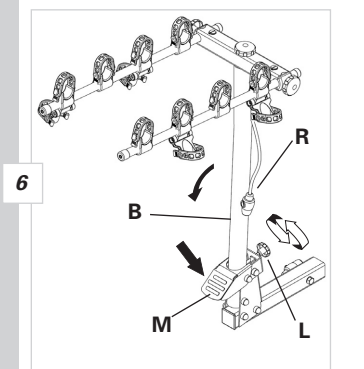
### Using the Tilt-down Feature

1. Loosen the upright securing knob (L). See Figure 6.
2. Make sure you have a firm grip on the carrier head.
3. Depress the foot pedal (M) and carefully lower the upright tube until it reaches the stopping point.
4. To return the rack to its upright position, raise the upright tube until it clicks into position, and then securely tighten the upright securing knob.
5. The rack must be secured in an upright position before traveling. After returning the rack to an upright position, ensure all bikes are securely fastened to the rack before driving.

## CAUTION

### FOR SAFE AND PROPER USE OF YOUR HITCH RACK:

1. Keep bicycle tires clear of the exhaust pipe. Hot exhaust can melt or burn bicycle tires.
2. Inspect your hitch rack before each use, both before and after loading bicycles. Ensure all bolts, knobs, hitch pins and locks are installed properly and tightened securely.
3. Check the security of all bikes at regular intervals during use, more frequently on bumpy roads, and immediately if the bicycles shift position.
4. Never exceed the maximum bicycle limit or load limit listed in this owner's manual or vehicle or receiver hitch maximum tongue weight.
5. Do not use any portion of the rack as a step to access vehicle roof.
6. Do not attach this rack to a trailer or to a vehicle being towed by another vehicle.
7. Reduce speed when driving on rough or unsurfaced roads.
8. Remove the hitch rack from vehicle when not in use.



6