

PERFORMANCE[®]**ViewPoint[™]****TAKE
5**

rechargeable LED headlight with charger

I. Battery Installation

1. Fit a small coin into the screw slot (A) on the underside of the light case and turn it 90° to the OPEN position. See Figure 1.
2. Separate the top and bottom halves of the light case, and insert 4 "AA" batteries, ensuring battery orientation matches the diagram inside the battery case. See Figure 2.

Note: The NiMH batteries supplied with your light case will need to be charged before use. See "Charging Batteries" below.

3. Fit the bottom and top halves of the light back together and close firmly. With a small coin turn the screw slot 90° to the CLOSE position.

II. Bracket Installation

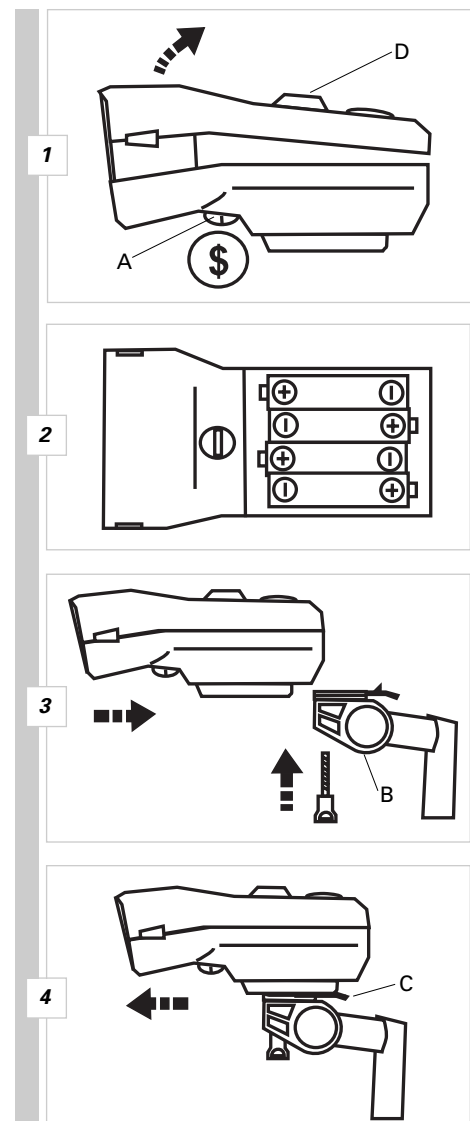
1. Attach the mounting bracket (B) to handlebar as shown in Figure 3. Use the supplied rubber shim as necessary to ensure a secure fit.
2. Attach the light to the bracket. Slide the light onto the bracket from front to back. Ensure light is securely attached to bracket before riding.
3. To remove the light, press the release tab (C) and slide the light forward. See Figure 4.

III. To Operate

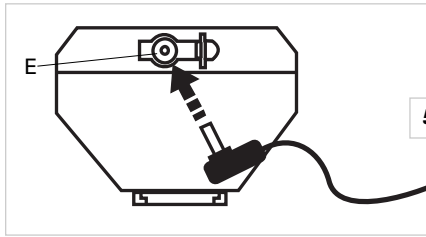
1. Press the power button (D) once for high beam, again for low beam, and a third time to turn off the light.
2. Indicator Light: (*) Steady Green = High Beam

(*) Flashing Green = Low Beam

(☞) Red = Low Battery



PERFORMANCE®



IV. Charging Batteries

1. When the battery charge is low, the low battery indicator light will illuminate red. Turn off the light and recharge the batteries before they are fully drained.
2. To recharge your light, plug the charger cord directly into the charge port (E) at the rear of the light. See Figure 5.
3. The Nickel Metal Hydride (NiMH) batteries must be recharged using only the charger supplied with your light. Do not use any other charger. Using the wrong charger may cause the batteries to overheat, leak or explode.
4. Indicator Light: Red = Charging
Green = Fully Charged
5. To ensure maximum battery life, recharge the light after each use, and always store the batteries with a full charge.
6. A full charge of the NiMH batteries requires approximately 8 hours.
7. Do not leave the light connected to the charger for more than 24 hours.

⚠ CAUTION

1. Charger intended for use with NiMH rechargeable batteries only. Attempts to charge other battery types may cause batteries to overheat, leak or explode.
2. For indoor use only. Do not expose charger to rain or moisture.
3. Use only the charger supplied with the light. Using an incompatible charger may damage the light or batteries or result in risk of fire or electric shock.
4. Do not charge batteries for more than 24 hours, as this may damage the batteries.
5. Disconnect charger from power source when not in use and before installing or removing batteries.
6. Do not use extension cords or any other attachment not recommended by the manufacturer. Doing so may result in risk of fire, electric shock or other injury.
7. Do not operate charger if it has been damaged or subjected to shock.

**Performance Tech Support 1(800)553-8324
9am-6pm EST Monday-Friday**



Performance, Inc.
One Performance Way
Chapel Hill, N.C. 27514
Made in China
www.performancebike.com

PERFORMANCE and the Flying P Logo are registered marks of Performance, Inc.

40-2075 0504_1