

# XPORT

## FREELoader

*dual receiver*

### 4-bike hitch rack



***Thank you for your purchase of an XPORT™ hitch rack. The XPORT™ Freeloader will securely carry up to 4 bicycles, and tilts down to allow convenient access to the rear of your vehicle. Please read these instructions thoroughly before using your new hitch rack.***

#### **⚠ CAUTION**

IT IS THE USER'S RESPONSIBILITY TO ENSURE THE SAFE AND PROPER USE OF THIS PRODUCT. Improper attachment or misuse of this product may result in personal injury and serious damage to the bicycles, the hitch rack, your vehicle or vehicles following behind you on the road.

**Tech Support 1(800)553-8324**

Made in Taiwan

40-3551 0107\_3



### Maximum Bicycle Limit:

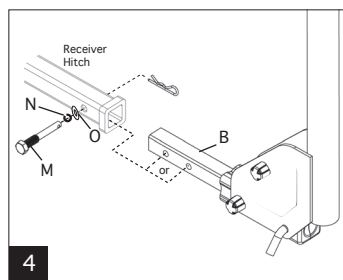
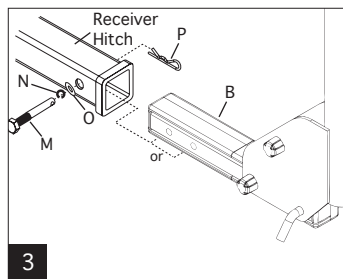
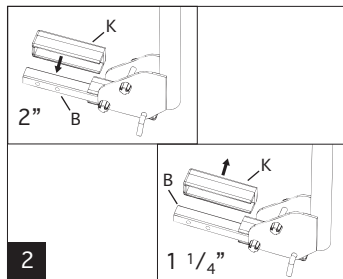
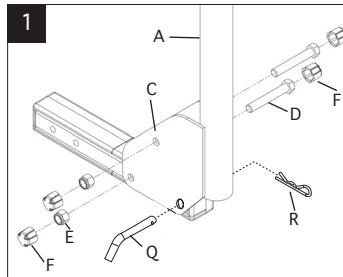
4 bicycles

### Maximum Load Limit:

180 lbs.

## CAUTION

DO NOT EXCEED THE MAXIMUM BICYCLE LIMIT OR LOAD LIMIT.



## I. Parts List

Part	Part Code	Quantity
Upright Tube.....	A.....	1
Hitch Foot.....	B.....	1
Base Bracket.....	C.....	1
Assembly Bolts.....	D.....	2
Locknuts.....	E.....	2
Nut Caps.....	F.....	4
Top Clamping Plate.....	G.....	2
Knob Bolts.....	H.....	2
Bottom Clamping Plate.....	I.....	1
Rubber Cradle Pads.....	J.....	8
2" Hitch Sleeve.....	K.....	1
Hitch Bolt.....	M.....	1
Slotted Washer.....	N.....	1
Flat Washer.....	O.....	1
Hitch Bolt Pin Clip.....	P.....	1
Clevis Pin.....	Q.....	1
Clevis Pin Clip.....	R.....	1

## II. Assembly

### Assembling the Hitch Rack

1. Remove the hitch rack and all other contents from the box.
2. Attach the hitch foot (B) to the base bracket (C) as shown in Figure 1. Tighten the assembly bolts (D) securely, and cover the bolt heads and nuts with nut caps (F).

### Installing the Hitch Rack (2" Receiver Hitch)

1. Attach the 2" hitch sleeve (K) to the end of the hitch foot (B) as shown in Figure 2. Tap the sleeve onto the RIGHT side of the hitch foot with a rubber mallet.
2. Slide the hitch foot (B) into the vehicle receiver hitch, and determine whether vehicle bumper clearance will be an issue. If clearance is not an issue, align the bolt hole that is furthest from the end of the hitch foot with the hole in the vehicle receiver hitch. If bumper clearance is an issue, align the bolt hole that is closest to the end of the hitch foot with the hole in the vehicle receiver hitch. See Figure 3.
3. Slide the slotted (N) and flat (O) washers onto the hitch bolt (M), thread the hitch bolt through the LEFT side of the receiver hitch and hitch foot, and tighten securely. See Figure 3. Insert the hitch bolt pin clip (P) through the hole in the end of the hitch bolt.

### Installing the Hitch Rack (1 1/4" Receiver Hitch)

1. The hitch sleeve (K) is not required. See Figure 2.
2. Slide the hitch foot into the vehicle receiver hitch, and determine whether vehicle bumper clearance will be an issue. If clearance is not an issue, align the bolt hole that is furthest from the end of the hitch foot with the hole in the vehicle receiver hitch. If bumper clearance is an issue, align the bolt hole that is closest to the end of the hitch foot with the hole in the vehicle receiver hitch. See Figure 4.
3. Slide the slotted (N) and flat (O) washers onto the hitch bolt (M), thread the hitch bolt through the receiver hitch and hitch foot, and tighten securely. See Figure 4. Insert the hitch bolt pin clip (P) through the hole in the end of the hitch bolt.

## III. Using the Hitch Rack

### Loading the Bicycles

1. Unthread the knob bolts (H) completely and remove the top clamping plates (G). See Figure 5.
2. Load the largest bicycle first and position it closest to the vehicle. Make sure the bicycle is balanced in the bottom clamping plate (I) as shown in Figure 6, with both wheels parallel to the ground. If the bicycle's frame geometry does not allow it to be positioned with the wheels parallel to the ground, use a frame adapter tube (such as the Xport Frame Adapter, 40-1804) to level the bike. This is often necessary with women's frames, dual suspension frames and kid's frames.

## CAUTION

Carrying a bicycle that is not balanced in the bottom clamping plate can exert sufficient force on the clamping plates and bicycle frame to damage the hitch rack or the bicycle.

3. Load all additional bicycles, alternately facing the handlebars left or right so that alternating bikes face in opposite directions. Ensure all bicycles are balanced in the bottom clamping plate.
4. Install the top clamping plates (G) and tighten the knob bolts (H) securely. See Figure 6.
5. You may want to use an additional strap or shock cord (not included) to prevent contact between bicycles or to secure the wheels to prevent them from spinning.
6. Once all bicycles are secure, make sure no part of any bicycle can contact and potentially scratch or otherwise damage the vehicle.

## CAUTION

### FOR SAFE AND PROPER USE OF YOUR HITCH RACK:

1. Keep bicycle tires clear of the exhaust pipe. Hot exhaust can melt or burn bicycle tires.
2. Inspect your hitch rack before each use, both before and after loading bicycles. Ensure all bolts, knobs, clevis pins and pin clips are installed and tightened properly.
3. Make sure no part of the bicycles or rack can contact and potentially scratch or otherwise damage the vehicle.
4. Check the security of all bikes at regular intervals during use, more frequently on bumpy roads, and immediately if the bicycles shift position.
5. Never exceed the maximum bicycle limit or load limit listed in this owner's manual.
6. Remove the hitch rack from vehicle when not in use.

### Locking the Bikes

1. A standard padlock (not included) can be used to secure the bicycles to the rack.
2. Once the bikes are attached and the top clamping plate is installed, secure a padlock through the holes in the top and bottom clamping plates.
3. Keep in mind that locks deter theft but cannot guarantee the security of your bicycles.

### Using the Tilt-down Feature

1. Do not tilt the rack with bicycles attached. If you lose your grip while tilting the rack it could fall, damaging the bicycles and rack or causing personal injury.
2. Hold the upright tube (A) in place or have someone hold it for you.
3. Remove the clevis pin clip (R) from the clevis pin (Q), remove the clevis pin from the hitch foot and carefully lower the upright tube. See Figure 7.
4. To return the rack to its upright position, raise the upright tube, insert the clevis pin (Q) and secure it with the clevis pin clip (R).

## CAUTION

Do not tilt rack with bicycles attached. Rack could fall, damaging the bicycles and rack or causing personal injury. Do not drive with the rack tilted down. Rack must be secured in an upright position before traveling. After returning the rack to an upright position, ensure all bikes are securely fastened to the rack before driving.

