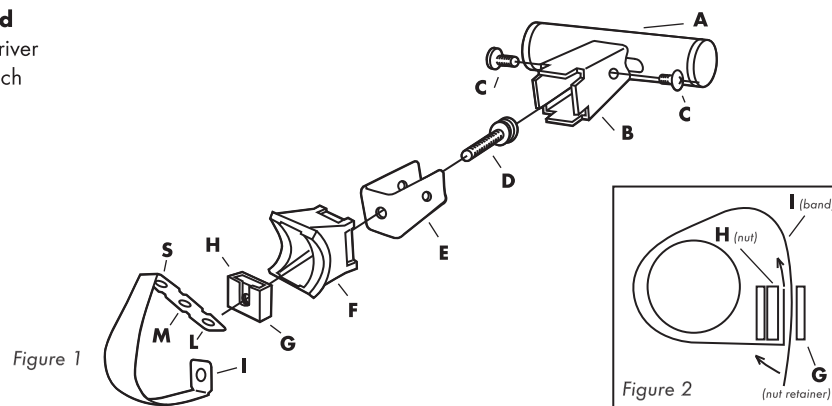


Tools Required

- Phillips screwdriver
- 3mm hex wrench



Assembly Instructions

1. Remove the two Phillips screws (C) from bar holder (B), and pull the bar holder off of the base bracket (F).
2. Unthread the 3mm hex bolt (D) from the metal bracket (E) and remove the metal bracket from the base bracket.
3. Pull the band assembly (G, H, I) out of the base bracket.
4. Wrap the stainless band (I) around your handlebar in the desired mounting position to determine which hole position to use (see chart at right).
5. Wrap the stainless band around the bar and insert the ends through the nut retainer (G). See Figure 2.
6. Cut off or bend over the protruding end of the stainless strap, and press the base bracket (F) onto the strap assembly.
7. Attach the metal bracket (E) to the base bracket using the 3mm hex bolt (D).
8. Press the bar holder (B) onto the base bracket and re-tighten the Phillips screws (C).

Hole Position	Bar Diameter
Small (S)	22mm - 25mm
Medium (M)	28mm - 31.8mm
Large (L)	32mm - 35mm

Fine Tuning

1. The bar holder (B) can be attached to the base bracket in a horizontal or vertical position. Simply rotate the metal bracket as necessary to align the attachment holes.
2. The bar (A) can also be adjusted 20mm side to side. Before attaching the bar holder to the base bracket, loosen the Phillips screw inside the bar holder, position the bar as desired and re-tighten the Phillips screw.

