



torque wrench set

Thank you for purchasing the Spin Doctor™ Torque Wrench Set. An important tool to have around, the torque wrench will allow you to confidently install components according to manufacturers' recommended torque specifications.

I. Using the Torque Wrench

1. The Spin Doctor™ Torque Wrench Set includes seven bits: 3mm, 4mm, 5mm, 6mm, 8mm and 10mm hex bits and a T25 torx bit.
2. To attach or remove bits, depress the button on the back of the wrench head. See Figure 1.
3. To reverse wrench direction, move the black lever on the back of the wrench head to the correct position. See Figure 2.
4. Turn the wrench handle clockwise to increase or counterclockwise to decrease the torque setting. Read the current torque setting across the top of the red indicator needle in the scale on the handle. See Figure 3.
5. When the torque setting is reached, the handle will break free and there will be an audible click. Continuing to apply pressure after the click will result in higher torque than the original setting.
6. Torque values listed on the Spin Doctor™ Torque Wrench scale are shown in Newton Meters (Nm). See the table below for Inch Pound (in-lb) conversion values.

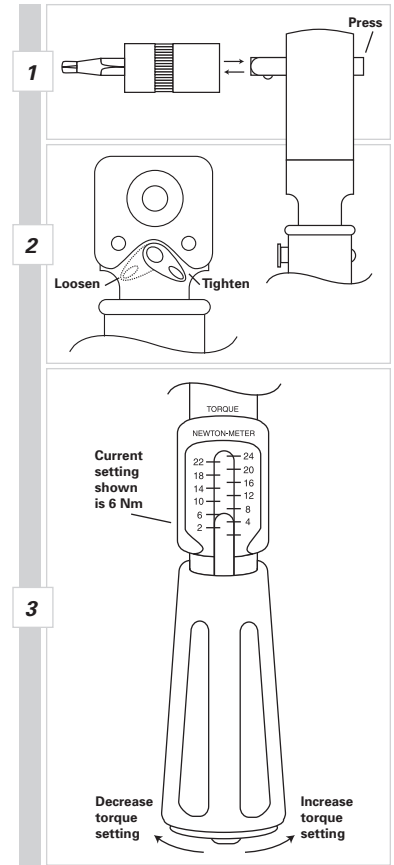
*Rounded to nearest whole inch pound

Newton Meters (Nm)	=	Inch Pounds (in-lbs)*	Newton Meters (Nm)	=	Inch Pounds (in-lbs)*
1	=	9	13	=	115
2	=	18	14	=	124
3	=	27	15	=	133
4	=	35	16	=	142
5	=	44	17	=	150
6	=	53	18	=	159
7	=	62	19	=	168
8	=	71	20	=	177
9	=	80	21	=	186
10	=	89	21	=	195
11	=	97	23	=	204
12	=	106	24	=	212

Tech Support 1(800)553-8324

Made in Taiwan

40-4160 1111_2



torque wrench set

Thank you for purchasing the Spin Doctor™ Torque Wrench Set. An important tool to have around, the torque wrench will allow you to confidently install components according to manufacturers' recommended torque specifications.

I. Using the Torque Wrench

1. The Spin Doctor™ Torque Wrench Set includes seven bits: 3mm, 4mm, 5mm, 6mm, 8mm and 10mm hex bits and a T25 torx bit.
2. To attach or remove bits, depress the button on the back of the wrench head. See Figure 1.
3. To reverse wrench direction, move the black lever on the back of the wrench head to the correct position. See Figure 2.
4. Turn the wrench handle clockwise to increase or counterclockwise to decrease the torque setting. Read the current torque setting across the top of the red indicator needle in the scale on the handle. See Figure 3.
5. When the torque setting is reached, the handle will break free and there will be an audible click. Continuing to apply pressure after the click will result in higher torque than the original setting.
6. Torque values listed on the Spin Doctor™ Torque Wrench scale are shown in Newton Meters (Nm). See the table below for Inch Pound (in-lb) conversion values.

*Rounded to nearest whole inch pound

Newton Meters (Nm)	=	Inch Pounds (in-lbs)*	Newton Meters (Nm)	=	Inch Pounds (in-lbs)*
1	=	9	13	=	115
2	=	18	14	=	124
3	=	27	15	=	133
4	=	35	16	=	142
5	=	44	17	=	150
6	=	53	18	=	159
7	=	62	19	=	168
8	=	71	20	=	177
9	=	80	21	=	186
10	=	89	21	=	195
11	=	97	23	=	204
12	=	106	24	=	212

Tech Support 1(800)553-8324

Made in Taiwan

40-4160 1111_2

