

# Performance Forté classic gel bar wrap

5\_29\_03

Art @100%

Magenta Key lines don't print



1. pms 2935 2. pms 2935-70% 3. 100% blk



# Forté

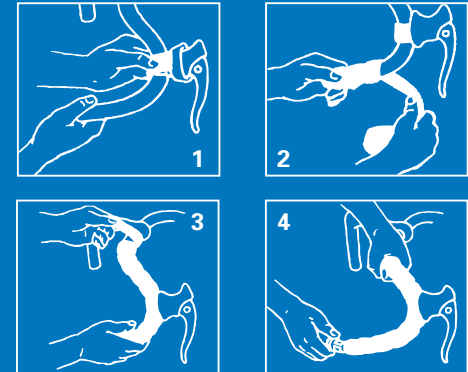
classic gel  
bar wrap

Forté  
classic gel  
bar wrap

## classic gel bar wrap

- Natural cork provides excellent grip
- Gel backing adds comfort
- Washable
- Easy to install

### Directions for Application



1. Clean the handlebar thoroughly.
2. Remove or fold back the brake lever covers. Use the pre-cut tape sections included to cover the brake mounting clamps. It may be necessary to use a household type adhesive tape to secure these pieces over the brake clamps.
3. Start from the end of the handlebar. You can secure the tape by wrapping it once upon itself or by leaving about 1/4" of the tape overhanging the bar's end. The overhanging portion can be folded into the bar's open end and secured by inserting the end plug. Please note that proper fit of the end plug depends on the make and size of the handlebar tubing and the amount of tape folded into the end of the bar. Plugs may not fit all bars.
4. Wrap towards the center of the bar, overlapping approximately 1/3 of the tape's width. The tape should be pulled fairly tight, but not stretched to the point of ripping.
5. Continue wrapping towards the stem until you have covered enough of the bar to suit your personal preference. The end of the tape can be secured by using the provided finishing tape or by using standard electrical tape.



**Performance Inc.**  
One Performance Way  
Chapel Hill, NC 27514  
Made in Taiwan  
PerformanceBike.com  
PERFORMANCE and the Flying P are  
registered marks of Performance Inc.

50-2148



**Forté classic  
gel bar wrap**      **Black (BLK)**