

XPORT[™]

Traveler Ball Hitch Adapter

Thank you for purchasing the XPORT Ball Hitch adapter. When used with the XPORT Traveler Uprights, this adapter allows the hitch rack to be mounted on vehicles with a ball type towing hitch.

Please read all instructions for Assembly and Attachment to vehicle before using your XPORT Hitch rack.

Notes:

1. Minimum hitch requirements: 200 lb or higher tongue load rating. The rating must be stamped on the bumper or hitch.
2. If mounting on a bumper that is less than 5 inches deep from the end of the bumper to the Ball Hitch location, a short Anti-Rotation Plate will be needed. Performance part # 39-4203 (see Figure 2).

CAUTION: IT IS THE USER'S RESPONSIBILITY TO INSURE THE SAFE AND PROPER USE OF THIS PRODUCT!

Improper attachment or misuse of this product may result in damage to your bicycles, your vehicle, or the vehicles behind you on the road.

Contents

Part	Part Code	QTY
Hitch Foot	A	1
Anti-Rotation Plate	B	1
Hitch Bolt	C	1
Thin Hitch Washer	D	1
Thick Hitch Washer	E	1
Large Lock Nut	F	1
Cap Screws	G	2
Small Lock Nuts	H	2

Assembly

See the Hitch Rack Upright instructions for assembly of the Upright to the Hitch Foot.

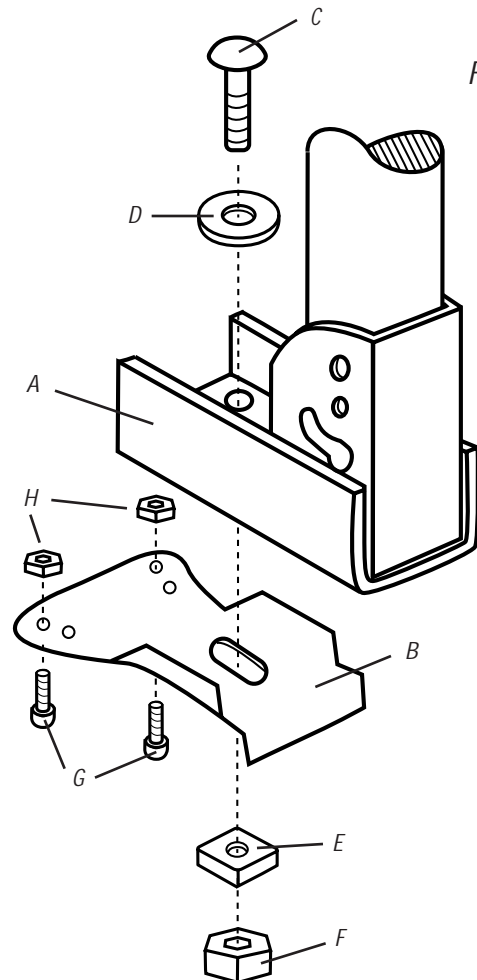
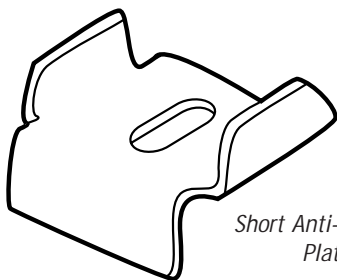


Figure 1

Note: Mounting on a bumper less than 5 inches deep at the ball hitch location requires the use of a short anti-rotation plate. Order part **39-4203**.



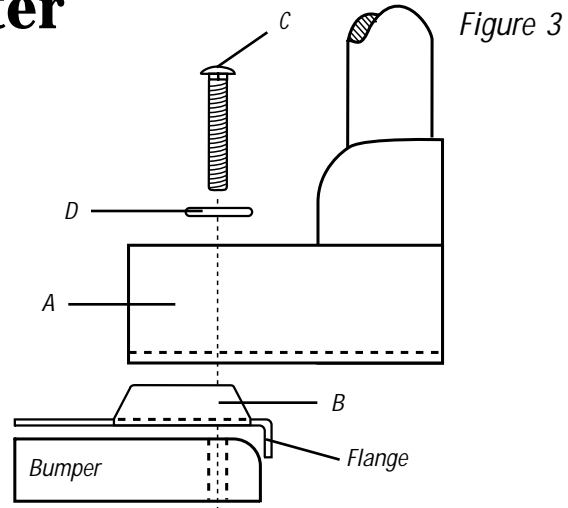
Short Anti-Rotation Plate

Figure 2

Traveler Ball Hitch Adapter

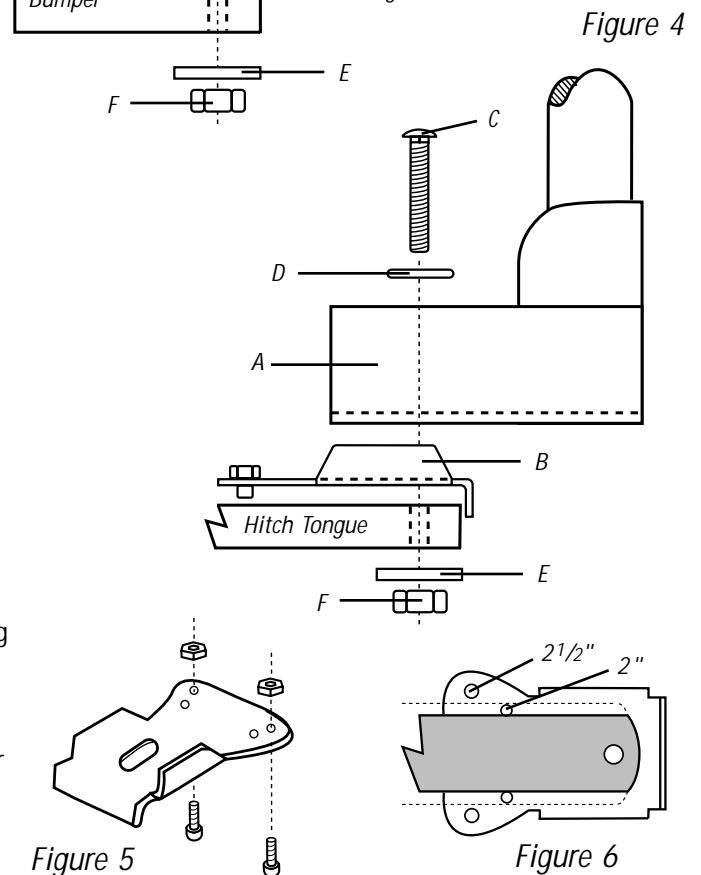
Installation on a Bumper

1. Remove the ball from bumper.
2. Place the Anti-Rotation Plate (B) on top of your bumper. Align the slot with the hitch bolt hole, with the flange resting against the rear edge of the bumper. See *Figure 3*.
3. Mount the Hitch Foot (A) on top of the Anti-Rotation Plate (B) and attach with the Hitch Bolt (C), Thin Washer (D), Thick Washer (E) and Large Lock Nut (F). See *Figures 1 and 3*. **Important: Make sure the flange of the Anti-Rotation Plate (B) is firmly against the rear edge of the bumper before tightening the Hitch Bolt (C).** If not, contact Performance to order a short Anti-Rotation Plate (part # 39-4203).
4. Tighten the Hitch Bolt (C) (35 to 40 ft-lbs).



Installation on a Hitch Tongue

1. Remove the ball and measure the width of your hitch tongue.
2. For a 2" wide tongue, install the 2 Cap Screws (G) through the inner set of holes on the Anti-Rotation Plate (B).
3. For a 2 1/2" wide tongue use the outer set of holes. Attach the Cap Screws (G) with the heads of the screws on the bottom and the Small Lock Nuts (H) on top as shown in *Figure 5*.
4. Place the Anti-Rotation Plate (B) on your hitch tongue, align the slot with the hitch bolt hole. The two screws should fall on either side of the tongue and prevent the plate from rotating on the hitch bolt hole. See *Figure 6*.
5. Mount the Hitch Foot on top of the Anti Rotation Plate (B) and attach it with the Hitch Bolt (C), Thin Washer (D), Thick Washer (E) and Large Lock Nut (F). See *Figures 1 and 4*.
6. Tighten the Hitch Bolt (C) (35 to 40 ft-lbs).



Performance Tech Support 1(800)727-2453
9am-6pm EST Monday-Friday