

PERFORMANCE

AXIOM™ Cyclocomputers

Owner's Manual

Determining Wheel Circumference

In order for the Axiom Cyclocomputer to accurately compute distance and speed, you must enter your actual wheel circumference. There are two methods of determining your wheel circumference: 1) the Tire Size Chart Method or 2) the Roll Out Method (the Roll Out Method gives you a higher degree of accuracy).

Method 1 - Tire Size Chart Method

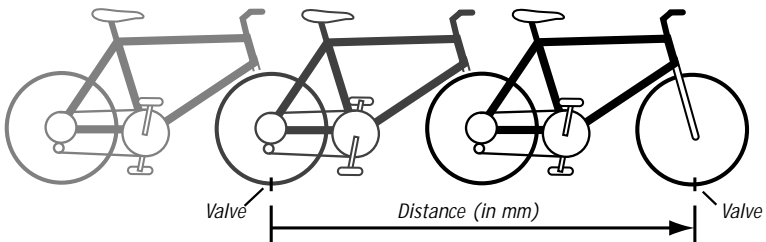
Using the chart below, locate the size of tire that you will be using on your front wheel. The wheel circumference (in mm) is shown to the right of the tire size.

Example: for a tire size of 700x25, the corresponding wheel circumference is 2086 mm - 2086 is the number you need to program into your computer.

<i>Tire Size</i>	<i>Wheel Circumference (mm)</i>	<i>Tire Size</i>	<i>Wheel Circumference (mm)</i>
20 x 1.75	1528	27 x 5/8	2077
24 x 1	1753	27 x 1	2105
24 x (Tubular)	1759	27 x 1 1/8	2123
26 x (Tubular)	1929	27 x 1 1/4	2142
26 x 1	1913	700C (Tubular)	2083
26 x 1.25	1967	700 x 20	2058
26 x 1.5	1974	700 x 25	2086
26 x 1.9	2048	700 x 28	2096
26 x 2.2	2074	700 x 32	2114
26 x 1 3/8	2068	700 x 35	2139

Method 2 - Roll Out Method

Stand your bicycle upright. With your tire inflated to its proper pressure, rotate your wheel so that the valve is located at the bottom. Make a mark of the valve's location on the floor. Roll the bicycle one complete wheel revolution, in a straight line, until the valve is again at the bottom. Mark this new location of the valve on the corresponding point on the floor. Measure the distance between the marks, in millimeters (mm). This is the value of the wheel circumference that you need to program in to your computer. (Note: inches multiplied by 25.4 converts inches into mm; i.e. 1 inch = 25.4 mm).

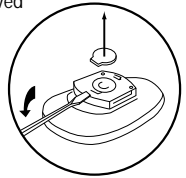
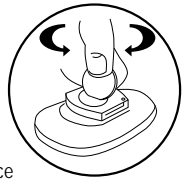


Battery Installation and Replacement

Using a coin or screwdriver, open the battery cover by twisting counterclockwise. Place the battery into the compartment with the positive side (+) facing up. Replace the battery cover. When no battery is in the unit, stored information will be preserved for approximately 15 seconds.

For 5.0: Use a screwdriver to remove the battery cover.

Use battery type 2032 (or equivalent) as replacement for the computer.
The 5.0 uses a A76 (or equivalent) battery.



Resetting the Computer

If the display shows irregular numbers, press the AC (Auto Clear) button on the back of the unit.
To clear the display on the 5.0, remove and reinstall the battery.

Note: This deletes all stored information.

Trouble Shooting

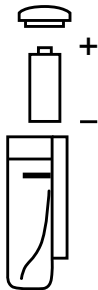
If the speed display does not appear :

Be sure the magnet and transmitter are properly aligned, and the distance between them is correct.
Cadence model only: If the cadence (C) does not appear, check that alignment of the cadence magnet and sensor is correct.

If the display fades :

Check the battery contacts. Replace the battery if necessary.

Replacing the Transmitter Battery On Wireless Models



Using a coin, open the transmitter battery cover by twisting counterclockwise. Place the battery into the compartment with the positive side (+) facing up/outward. Replace the battery cover.

Use only an alkaline 23A, 12V battery as replacement.
Use battery type MN21 (23A, 12V) as replacement for the transmitter.

Waterproof

Your computer was designed to be waterproof. But if you do use the computer in the rain, it is recommended to dry it thoroughly with a dry cloth, making sure to remove the computer from the handlebar mount and drying between the computer and handlebar mount.

Initial Set Up

Your Axiom 5.0 will compute distance and speed functions in either miles or kilometers. After installing the battery the kilometer (km/h) and mile (m/h) symbols will alternately be displayed. When the desired measuring unit is displayed (i.e. km/h or m/h), press the gray button. The wheel circumference value of 2124 (or your latest wheel circumference setting) will then be displayed.

If you already know your wheel circumference go to - *Programming Wheel Circumference*, otherwise go to - *Determining Wheel Circumference*

Programming Wheel Circumference and Odometer

When you know your wheel circumference, you are ready to program your wheel circumference into your computer.

If the computer is in the wheel circumference setup mode go to *The wheel circumference value ...* (forth paragraph down).

If you are not in wheel circumference setup mode, press the gray button until the ODO, odometer, is displayed on the screen. Press the gray button for two seconds, the kilometer (km/h) and mile (m/h) symbols will alternately be displayed. When the desired measuring units are displayed (i.e. km/h or m/h), click the gray button.

The wheel circumference value of 2124 (or your latest wheel circumference setting) will be displayed.

If the wheel circumference value shown is correct, press the gray button within 2 seconds to complete setup mode.

If you must change the wheel circumference value, wait two seconds and the right digit will begin to increase. When the correct digit is displayed press the gray button, the next digit will automatically begin changing. Repeat this process until all four digits display the correct wheel circumference. In the miles mode, once completed you will be out of setup mode.

If you are using kilometer mode, the odometer, ODO, may be programmed. Once the wheel circumference is programmed, the odometer will be shown. Program the ODO in the same manner as the wheel circumference or, if the ODO reading is correct, press the gray button six times to exit set up mode.

Note 1: You cannot program the odometer, ODO, in miles mode.

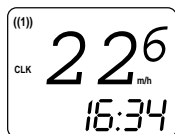
Note 2: Your Axiom computer has the ability to easily convert miles into kilometers and vice versa. After you configure your initial settings, you may switch measuring units at any time. Press the gray button until press the gray button twice and you will have converted units in your computer.

Displaying and Setting the Clock

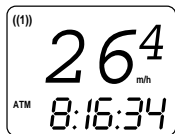
Select the clock function by pressing the gray button until the CLK icon is displayed. Press the gray button for two seconds, until the clock is displayed and the hour begins to change. The Axiom 5.0W has a 24 hour clock (i.e. 6 PM = 18). When the correct hour is displayed press the gray button. The minutes will begin to change. When the correct minutes are displayed, press the gray button. Once completed you will be out of CLK setup mode.

Computer Functions

Press the gray button to cycle through the functions. In all modes (except Set Up) current speed is displayed in the upper portion of the screen.

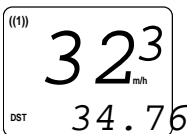


CLK: Clock with 24-hour display. See *Displaying and Setting the Clock* to program the clock.



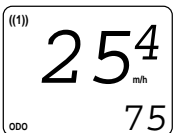
ATM: Ride time. This function times your total trip time. If you stop, the timer stops. When you resume riding, the timer continues timing your ride.

To reset the timer to zero, go to ATM mode, then press the gray button for two seconds. The trip distance will also reset to zero.



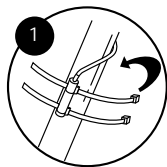
DST: Trip distance. This function calculates your total trip distance.

To reset the trip distance to zero, go to DST mode, then press the gray button for two seconds. The ride time will also reset to zero between ATM and TM. Once you have selected ATM or TM mode, press the RED button to exit set up mode.

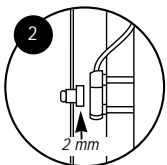


ODO: Odometer. This function displays your total distance traveled. See *If you are using kilometer mode...* for resetting ODO.

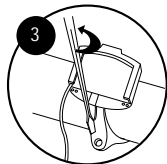
Mounting the Computer



The sensor should be mounted to the right fork blade. Using the cable ties, mount the sensor approximately halfway up the fork blade, but do not tighten yet.



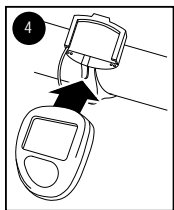
Mount the magnet to a spoke directly opposite the sensor. Line up the magnet so that it is centered between the top and bottom lines on the sensor. Tighten the spoke magnet screw, taking care not to overtighten it. See Diagram 2.



The distance between the magnet and the sensor should be 2 mm or less. Once the sensor is positioned properly and centered on the magnet, pull the cable ties tight. Recheck the sensor for proper alignment.

Route the cable upward (either winding it around the fork blade or laying it in a straight line on the outside of the fork blade). Wind the cable around the front brake cable. Be sure to leave sufficient slack so that the computer cable will not interfere with the handlebar movement. Secure the cable to your fork blade with cable ties.

Note: Do not route the sensor cable along lighting wires/cables. This may cause the computer to not function properly.



Secure the mount to your handlebars, using a rubber shim if necessary. See Diagram 3.

Slide the computer forward into the mounting unit until it snaps into place with an audible “click” (Diagram 4). To check proper function, activate the computer by rotating the front wheel. The current speed display should show a reading. To remove your computer from its mount, depress the tab underneath the unit and slide it towards you.